



School Lane | Ponciau | Wrexham | LL14 1RP

Offers in the region of £155,000



ROSE RESIDENTIAL

School Lane | Ponciau

Wrexham | LL14 1RP

Offers in the region of £155,000

Arranged over three floors, this well presented home offers generously proportioned accommodation throughout, including a recently re-fitted kitchen with integrated appliances. Set within the popular area of Ponciau, the property provides flexible and practical living space, ideal for modern lifestyles. The accommodation includes two well sized double bedrooms and a low maintenance rear garden, making it a ready-to-move-into home in a convenient location.

Entrance

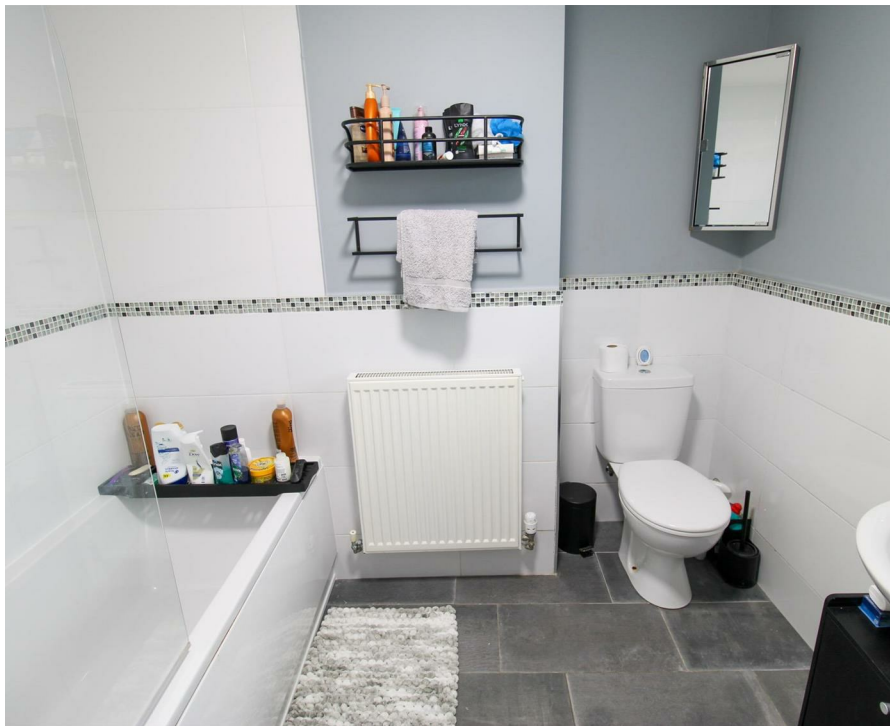
A part-glazed uPVC entrance door opens directly into the lounge, creating a bright and welcoming first impression.

Lounge

10'7" x 10'9" (3.25m x 3.28m)

A well proportioned reception room featuring a front facing uPVC double glazed window, laminate floor, TV unit to one alcove and radiator.





Kitchen

11'10" x 9'8" (3.63m x 2.96m)

The newly fitted kitchen is well appointed with an extensive range of wall, drawer and base units, complemented by matching work surfaces. Below the rear facing uPVC double glazed window is a stainless steel sink with drainer. There is an integrated dishwasher, Zanussi oven with gas hob above, space for a fridge/freezer and a wall mounted Ideal Logic boiler. A breakfast bar with additional storage completes this practical and stylish space.

Stairs & Landing

Stairs rise from the lounge to the first floor landing, where doors lead to both bedrooms.

Bedroom One

10'7" x 14'1" (3.23m x 4.30m)

A well proportioned double bedroom benefiting from a range of fitted wardrobes and drawers. There is a front facing uPVC double glazed window, radiator and fitted carpet.

Bedroom Two

11'0" x 8'5" (3.37m x 2.58m)

Another genuine double bedroom with rear facing uPVC double glazed window with far reaching views, radiator and fitted carpet.

Stairs & Rear Hallway

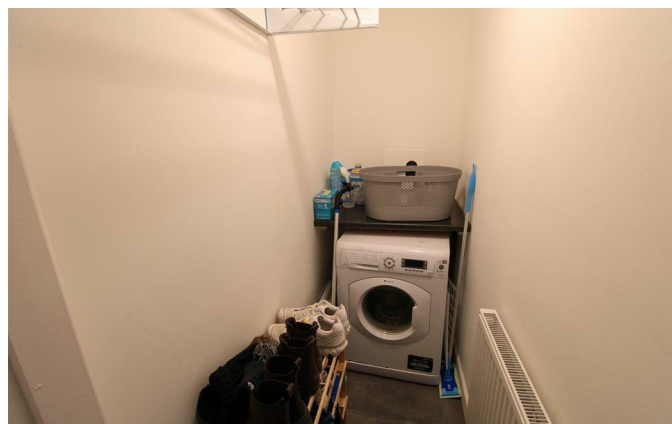
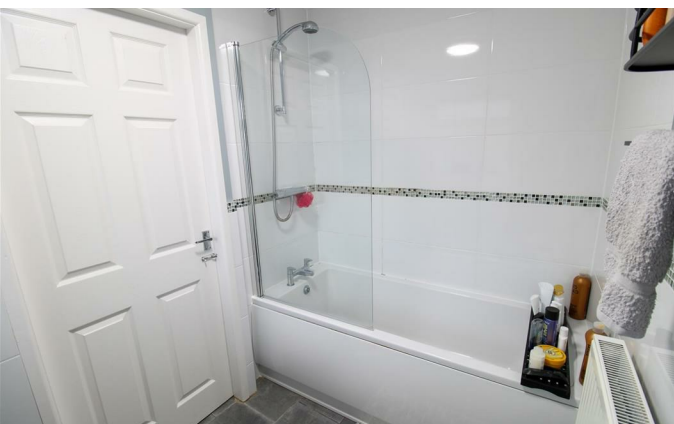
A further staircase leads from the kitchen down to the rear hallway, which provides access to the utility room and bathroom, a radiator and tiled flooring. A rear facing, part glazed, uPVC door opens directly onto the garden.

Utility Room

The useful utility room benefits from plumbing for a washing machine, with space for a tumble dryer above, together with a radiator and tiled flooring.

Bathroom

A modern bathroom fitted with a three piece suite comprising of a panelled bath with glass shower screen & chrome mixer bar shower, low level w/c with push flush and a pedestal sink. There is a side facing uPVC double glazed window, tiled flooring and radiator.



External

To the front of the property is a small gravelled garden area with a pathway leading to the front entrance door. The rear garden has been thoughtfully designed for ease of maintenance, featuring artificial lawn and the added benefit of gated rear access.

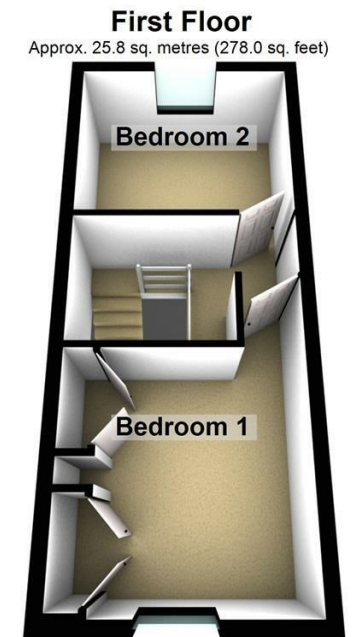
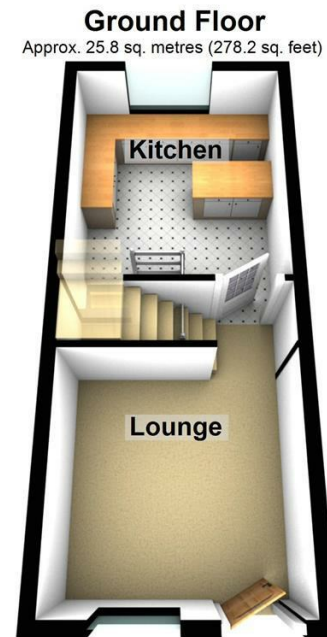
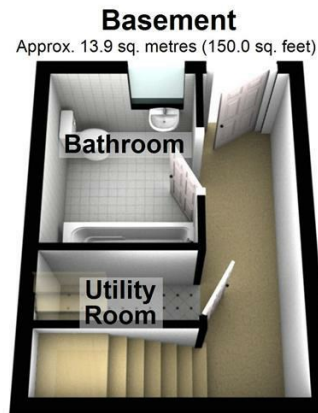
Disclaimer

The information provided on this property listing, including but not limited to descriptions, photographs, measurements, and pricing, is for informational purposes only. While all reasonable efforts have been made to ensure the accuracy of this information, the owner, agent, or company assumes no responsibility for any errors or omissions, and it is subject to change without notice.

All prospective buyers or tenants are strongly advised to verify any details and conduct their own due diligence before making any decisions. The property may be subject to changes in zoning, laws, or other factors that could impact its use or value. Additionally, the property is sold or leased "as-is" and may not be in perfect condition. By proceeding with any engagement with this property, you acknowledge that you have read, understood, and accepted these terms.

Anti Money Laundering (AML) Checks

We are required by law to carry out anti money laundering (AML) checks on all purchasers of property. Whilst we remain responsible for ensuring these checks and any ongoing monitoring are completed correctly, the initial checks are undertaken on our behalf by Lifetime Legal. Once your offer has been accepted, Lifetime Legal will contact you to complete the necessary verification. The cost of these checks is £60 (including VAT), which covers the cost of obtaining relevant data, as well as any manual checks and monitoring that may be required. This fee must be paid directly to Lifetime Legal before we can issue a memorandum of sale, and it is non-refundable.



Total area: approx. 65.6 sq. metres (706.3 sq. feet)

Energy Efficiency Rating		
	Current	Potential
Very energy efficient - lower running costs		
(92 plus) A		88
(81-91) B		
(69-80) C		64
(55-68) D		
(39-54) E		
(21-38) F		
(1-20) G		
Not energy efficient - higher running costs		
England & Wales		EU Directive 2002/91/EC

Wrexham

01978 504001
sales@rose-residential.co.uk